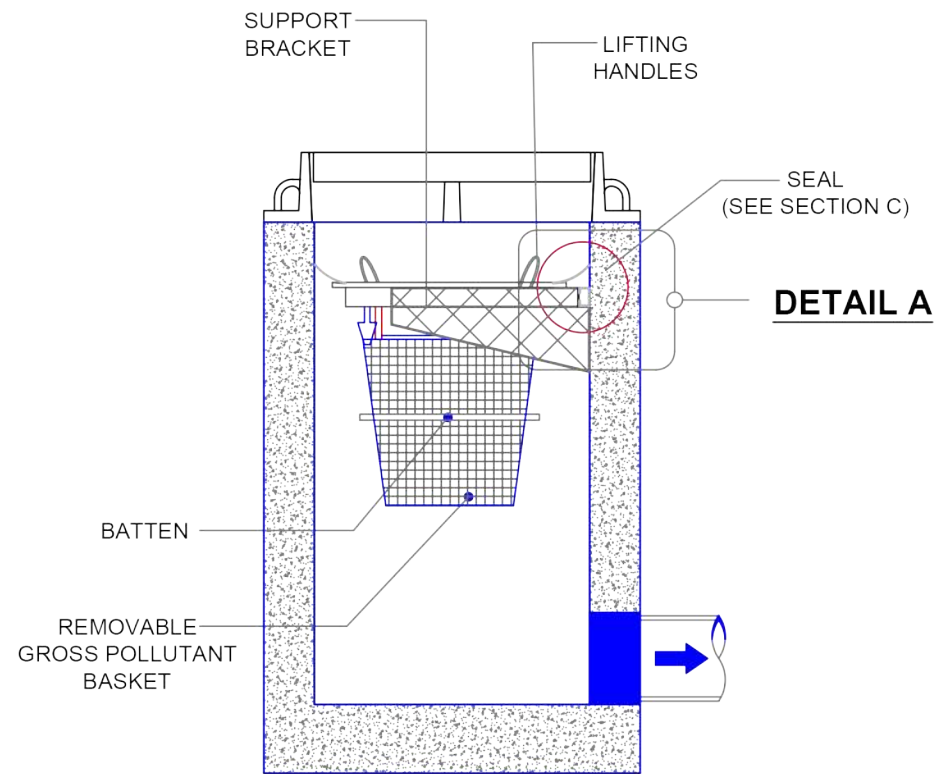
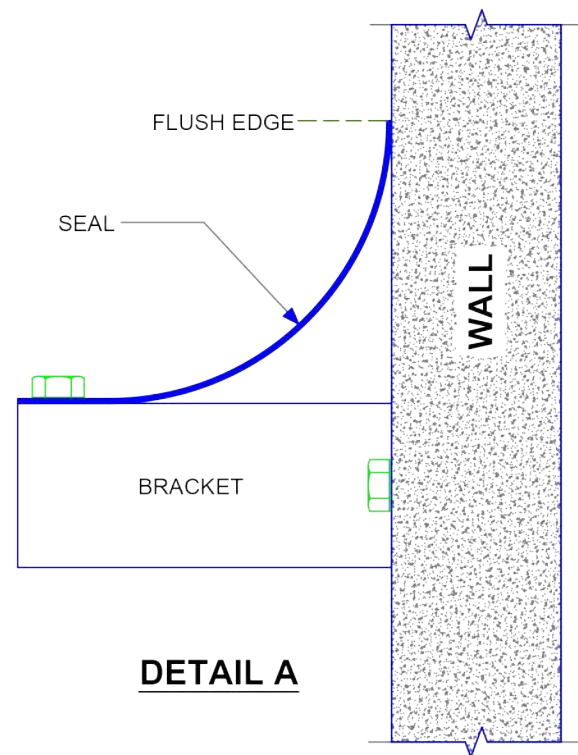


PLAN VIEW

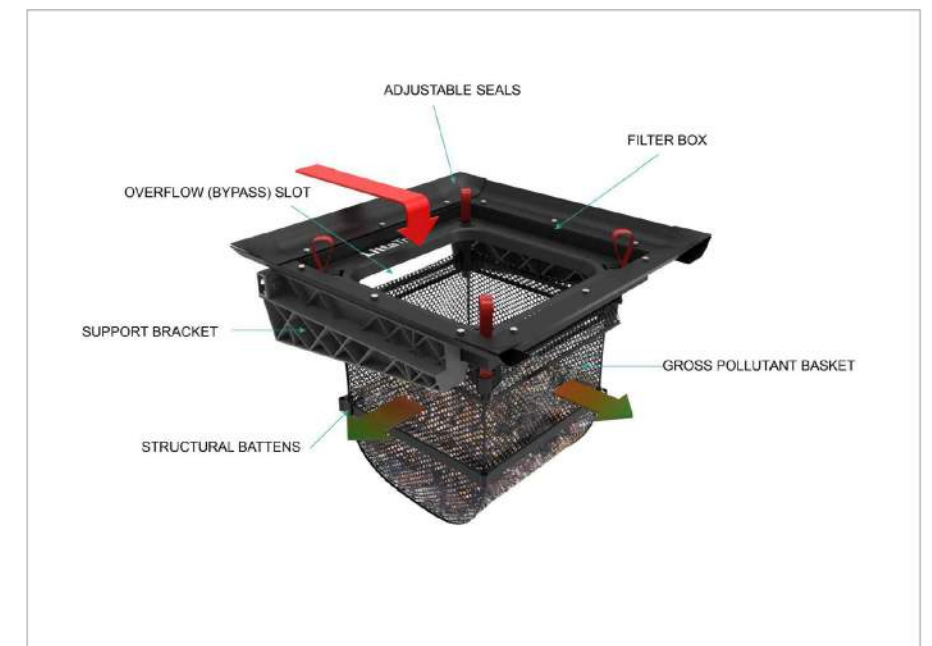


SECTION A-A



DETAIL A

ENVIROPOD LITTATRAP™ COMPONENTS



ENVIROPOD LittaTrap™ MODELS AND SIZES

Nominal Catch Basin Size (inch)	LittaTrap FC Model Size	Bracket Length (inch)	Min Filter Box Size (Without Seals)		Max Filter Box Size (With Seals)		Basket Collar Size		Basket Depth (inch)
			Length (inch)	Width (inch)	Length (inch)	Width (inch)	Length (inch)	Width (inch)	
18 x 18	LT4545	17.1	15.4	15.4	20.6	20.6	12.0	12.0	15.7
24 x 24	LT6060	22.4	20.2	20.2	25.3	25.3	17.3	17.3	15.7
36 x 24	LT9060	34.3	32.0	20.2	37.1	25.3	29.1	17.3	15.7

ENVIROPOD LittaTrap™ FLOW AND STORAGE SPECIFICATION

Basin Size (Inch)	LittaTrap Model Size	Screen Area in²	Maximum Trash Capture Volume (MTCV) - ft³	Design Flow Rate 50% MTCV CFS	Standard Bypass Flow CFS
18 x 18	LT4545	601	0.7	2.1	2.1
24 x 24	LT6060	969	1.6	3.2	3.3
36 x 18	2 x LT4545 *	1203	1.4	4.2	4.2
36 x 24	LT9060	1473	3.0	4.8	4.5
36 x 36	LT9060 + Seal Extension Kit *	1473	3.0	4.8	4.5
48 x 48	2 x LT9060 *	2946	6.0	9.6	9.0

The Enviropod LittaTrap™ has an adjustable bypass. Flow rates listed are for a standard set bypass with safety factor added. Please contact Enviropod for specific bypass requirements.

* Requires an additional seal extension kit for standard installation



WWW.ENVIROPOD.COM

ENVIROPOD™ LITTATRAP™ IS DISTRIBUTED IN USA UNDER LICENSE BY:



STORMTANK.COM

THE Enviropod® may be protected by one of the following Canadian, USA or International patent numbers and has other patents pending :
2,810,974, 13/824,376, 15/459,964, 2011302712, 588049

PATENT No.



ENVIROPOD LittaTrap™ SPECIFICATION DRAWING (IMPERIAL UNITS)

DRG No: **LT-GRATED INLET GENERIC** REV: J DATE: 09/15/21

JOB NO :	REV	REVISION DETAIL	DATE
PROJECT :	G	REDRAWN	12/14/21
	H	VP OPTIONAL	01/10/22
	I	UPDATE TABLE	01/11/22
DRN : R.P. 12/14/21	J	LT UPDATE	09/15/22
CKD : BVL 12/14/21			